



INTERKOOOL™

BY **MB MASTER-BILT®**
Refrigeration Solutions

WALK-IN COOLERS AND FREEZERS

THE INTERKOOL SYSTEM

COMPETITIVE

Featuring the latest in high density rail construction, InterKool offers maximum flexibility and convenience for a variety of applications.

Efficiencies in production and labor allow us to price InterKool walk-ins very competitively. Strict quality control measures including pre-assembly and inspection of each structure help assure customer satisfaction. The bottomline: You get a quality walk-in for less money.

COMPLETE

All InterKool walk-in panels are sold with either a matching remote

or packaged refrigeration system for a complete answer to your cold storage or retail needs. Refrigeration may also be provided through dual or multi-compressor modular remote systems.

FLEXIBLE

InterKool coolers, freezers and cooler/freezer combinations aren't based on standard sizes and can be built to any dimension to the nearest 1/2". The only restriction on size is an overall height of not more than 10 feet. L-shapes and glass door fronts are also available.

AGENCY LISTINGS AND CLASSIFICATIONS INCLUDE:



- State of Oregon
- UL Classified foam core material

Additionally:

- Meets requirements of Federal Energy Independence and Security Act of 2007
- Meets California Energy Code standards



InterKool L-shaped walk-ins and glass door fronts (above) as well as cooler/freezer combinations (right) are available.



PANELS

PANEL BASICS

InterKool panels are foamed-in-place with polyurethane for the greatest cooling efficiency. Panel perimeters are formed of the same polyurethane foam in a higher density.

Standard panels are four-inches thick with an optional five-inch thickness available. All wall, ceiling and floor panels feature tongue and groove construction with the tongue of one panel fitting solidly inside the groove of another creating the most dependable seal. The tongue edge of each panel is provided with an NSF listed gasket to help provide an airtight joint.

The standard wall and roof panel finish is 26 gauge stucco galvalume with numerous options in interior and exterior finishes to match your design scheme or durability requirements. The standard floor finish, when required, is .100 smooth aluminum. Floor panels are designed to withstand a uniformly distributed weight load of 600 pounds per square foot with a fully formed NSF interior radius and stamped corners. Multi-compartment walk-ins are available as fully floored, fully floorless, or with floor/less floor. L-shaped glass front walk-ins are also available. Floor angles will be provided to attach the wall panels to a concrete slab for floorless applications.

CAM-LOCK SYSTEM

The InterKool cam-locking system, together with tongue and groove construction and sealing gaskets, provides an accurate, tight fit between panels. The lock requires only a fac-

tory-supplied hex wrench to operate. When the wrench is turned, the lock is engaged and a gradual seal and panel alignment occurs. Plug buttons are provided to cover each cam-lock access hole.

Should the walk-in need relocation, the cam-lock process is easy to reverse. Panels can be taken apart as easily as they are put together.

FOAMED-IN-PLACE INSULATION

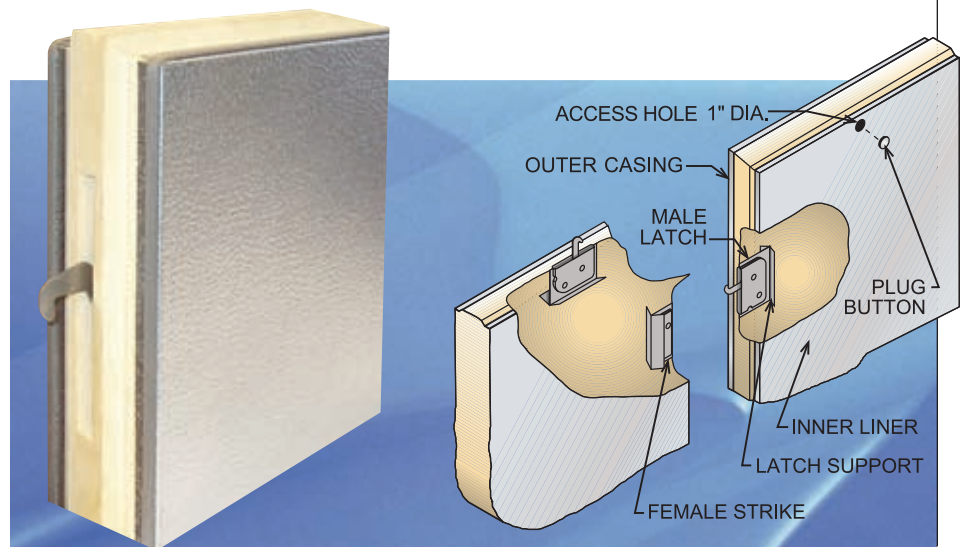
The polyurethane foamed-in-place construction method used in InterKool panels provides many advantages over other panel types:

- Increased energy efficiency due to polyurethane's greater temperature-retaining properties, or R-value
- Polyurethane foam permanently adheres to metal panels adding

strength and reliability

- Superior moisture resistance due to polyurethane's 97% closed cell content
- Maximum walk-in storage space because polyurethane foam allows for thinner walls
- An environmentally-friendly 245fa blowing agent with a zero ozone depletion potential

During the foaming process, the high-pressure foam is injected into the panel interior and expansion-cured for consistent density and no uninsulated areas within the panel. As further assurance against foam voids, InterKool panels are constructed on horizontal presses so panels lie flat during the foaming process and the injected foam expands evenly.



Featuring tongue and groove construction, InterKool panels are foamed-in-place with polyurethane. Panel perimeters are formed of the same polyurethane but in higher density. (Right) Panels are assembled by means of cam-locks requiring only a factory-supplied hex wrench to operate.

DOORS

CONSTRUCTION

The standard InterKool door size is 34" x 78" with 30" x 78" and 36" x 78" options available. Swing entry doors are a flush-mounted, infitting style constructed of a fiberglass reinforced heavy-duty synthetic frame, door perimeters and jamb. The door finish matches that of wall panels. The door and door frame section are the same core thickness and construction as specified for other panels. Glass doors, with optional LED lighting, are available for both low temp and medium temp applications.

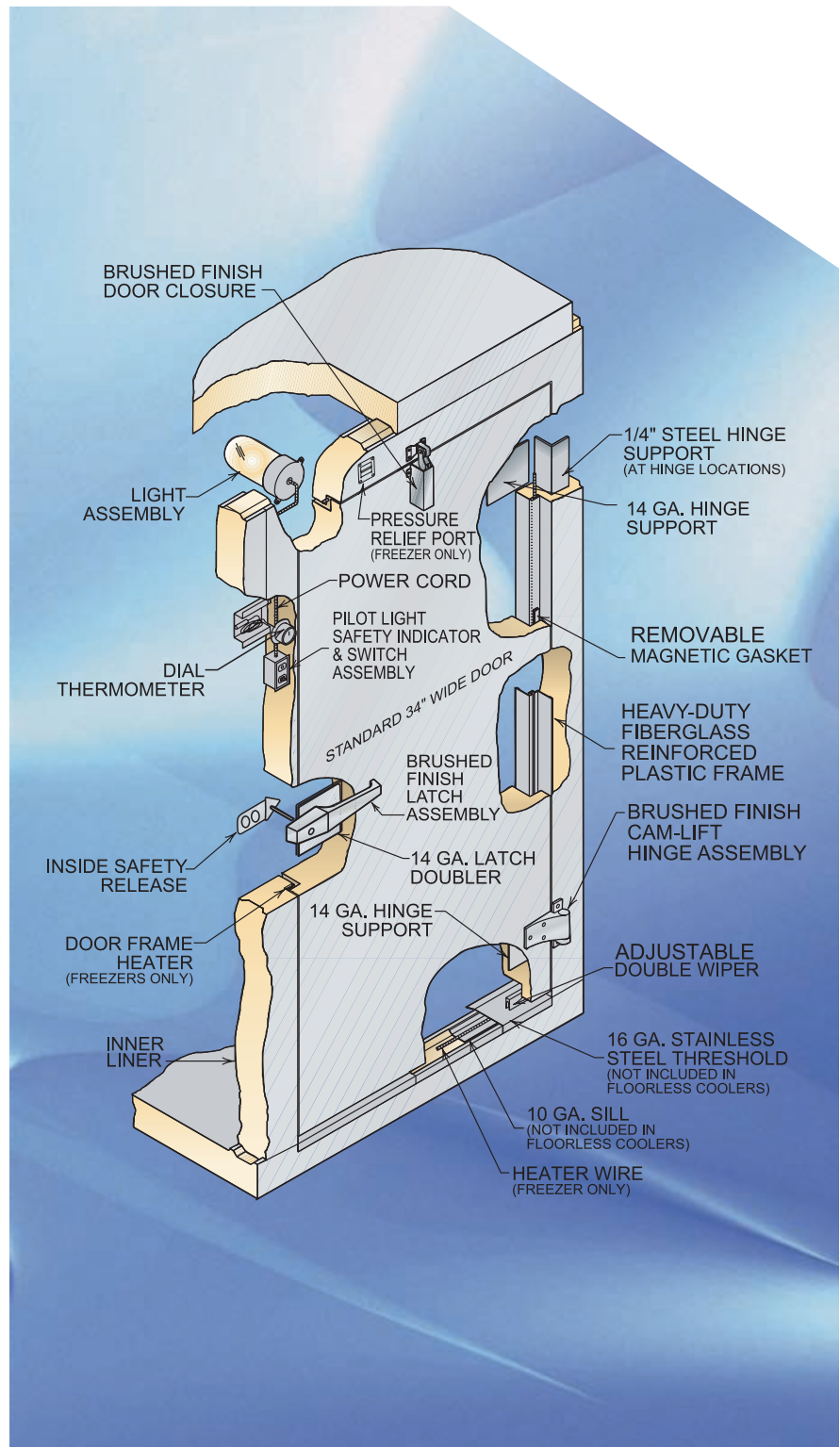
STANDARD FEATURES

InterKool doors are designed with features that meet current federal energy standards including:

- Two heavy-duty cam lift hinges with nylon bearings and a hold-open feature
- A door closer for positive closing
- Standard compact fluorescent light fixture (with bulb) connected to standard single pole switch with interior pilot light

Other standard features include:

- A key-locking pull handle with padlocking capabilities and no exposed fasteners
- Heavy gauge steel back-ups at the door and frame connecting points
- Dial thermometer
- Four-sided frame heater and pressure relief port (freezer only)
- Easily replaceable magnetic gasket along the top and sides and a wiper strip along the bottom
- 16 ga. stainless steel thresholds on all freezer doors and floor type cooler doors



REFRIGERATION SYSTEMS

SYSTEM CHOICES

InterKool walk-ins are paired with either a remote condensing unit and matching evaporator coil or a packaged system with both condensing unit and evaporator coil in one housing. Condensing units and evaporator coils are equipped with energy-saving fan motors (PSC for condensing units, ECM for evaporator coils).

M-SERIES REMOTE CONDENSING UNITS

M-series remote condensing units offer a wide variety of component options including a pre-charged system with quick-connect liquid and suction line sets up to 40 ft. M-series units vary from 1/2 to 6 H.P. with a wide selection of temperature ranges.

M-Series units can be configured with hermetic, semi-hermetic or scroll compressors. Generously-sized condensers and receivers assure quick temperature recovery in high ambient conditions and ample pump-down capacity for longer refrigeration line runs.

Other options include:

- Coated condenser coil
- Pump down switch
- Circuit breaker
- Heated and insulated receiver
- Adjustable low pressure control
- Suction line accumulator
- Oil separator
- Suction line filter
- Phase monitor
- Fan cycle control
- Henry relief valve
- Dual pressure control
- Medium temp timer (mounted)
- Medium temp timer (loose)



InterKool refrigeration choices include an M-Series remote condensing unit (top) paired with an E- or L-Series evaporator coil (second from top) or a packaged refrigeration system in either indoor (third from top) or outdoor version (fourth from top). Multi- and dual-compressor systems, like the DRS series (bottom) are also available.

E-SERIES & L-SERIES EVAPORATOR COILS

Remote condensing units are combined with matching E-Series or L-Series evaporator coils. The coils are ready to mount in position and are available in either air or electric defrost. Each is furnished with a properly sized expansion valve and room thermostat. Electric defrost models feature defrost termination-fan delay controls and drain line heaters.

PRS-2 SERIES PACKAGED UNITS

The PRS-2 series combines a condensing unit and evaporator coil into one unit with everything ready to mount on your InterKool walk-in. Designed to maximize space, the evaporator section mounts flush in a standard 4" thick ceiling panel.

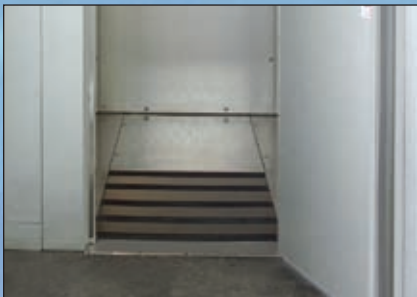
Standard features include:

- Power cords for most indoor models
- Condensate evaporator pan on indoor models
- Crankcase heater, drainline heater, head master and weather hood on outdoor models

MRS OR DRS SERIES MULTI-COMPRESSOR REMOTE SYSTEMS

InterKool refrigeration may also be provided through an MRS series modular multi-compressor remote system or DRS dual compressor system. These systems allow the remot-ing of refrigeration from walk-ins and other equipment to a single unit. Benefits include reductions in inside heat, air conditioning load and noise levels.

OPTIONS & ACCESSORIES



InterKool options include (clockwise) door kickplates, temperature alarms, membrane roof caps for outdoor applications, external ramps and internal ramps.



WALK-IN ENHANCEMENT

Add to the efficiency and convenience in your InterKool walk-in with our many options and accessories. Choices include:

- 5¹/₂" thick panels for added energy efficiency
- 36" wide entry door
- Swinging glass doors
- LED lighting for glass doors
- Flush mounted temperature alarm with digital LED display and audio and visual alarms
- Energy-saving entrance door strip curtains with ²/₃ overlap
- Third door hinge
- Membrane roof cap for outdoor applications
- Interior and exterior kick plates, 36" high, in .100 aluminum diamond plate finish
- Drop-in interior ramp for prefabricated floor
- Exterior ramp for prefabricated floor
- 4' fluorescent light fixtures with low temp ballast for freezer applications (including energy efficient T-8 fixtures and bulbs)
- Vapor-proof light fixture
- Trim strips
- Enclosure panels
- Metal cove base molding

FINISH OPTIONS

Stucco galvalume is the standard finish for InterKool panels. It provides the most durable surface for prolonging the life, performance and appearance of your walk-in. The standard floor finish, when required, is .100 smooth aluminum. However, we also offer numerous other finishes to choose from. With our assortment you can easily fulfill your budget and durability needs.

Wall and roof finish options:

- .032 stucco aluminum
 - .032 white stucco aluminum
 - .040 smooth aluminum
 - .040 stucco aluminum
 - .040 white aluminum
 - .040 white stucco aluminum
 - 26 ga. stucco galvanized steel
 - 26 ga. white stucco galvanized steel
 - 24 ga. galvanized steel
 - 20 ga. galvanized steel
- 22 ga. stainless steel
 - 22 ga. stucco stainless steel
 - 20 ga. stainless steel

Floor finish options:

- .100 diamond aluminum
- .125 diamond aluminum
- .188 diamond aluminum
- 16 ga. galvanized steel
- 16 ga. stainless steel

MASTER CONTROLLER REVERSE CYCLE DEFROST SYSTEMS

The Master Controller Reverse Cycle Defrost electronic control system, optional on walk-in coolers and freezers, brings a new level of efficiency and reliability to your refrigeration system by replacing certain mechanical parts with solid state electronic components.

Lab tests show that a **Master Controller Reverse Cycle Defrost-equipped system can save up to 27% more energy** over a conventional system depending on the application.

Installation time and labor costs are significantly reduced because all electrical components are factory pre-wired.

The Master Controller Reverse Cycle Defrost control board mounted to an evaporator coil is part of a refrigeration system also containing an electric expansion valve, a single or multi-compressor condensing unit, one or more evaporators, temperature sensors, pressure transducer, an optional remote display and an optional remote data logging/control system.

The Master Controller's demand defrost feature continuously checks the amount of ice buildup to determine if defrosting is required.

Integrated reverse cycle defrost is a patented innovation (U.S. patent no. 7,073,344) involving a reverse cycle valve that switches the direction of refrigerant flow during defrost and completely eliminates frost buildup **while reducing defrost energy usage by up to 80%.**





MB MASTER-BILT®
Refrigeration Solutions

908 Highway 15 North • New Albany, MS 38652

Phone: 800-647-1284 • Fax: 800-232-3966

www.master-bilt.com



For the latest product information and specifications go to
www.master-bilt.com/products/products.htm.

Due to continuous product enhancements, we reserve the right to change specifications without notice.

1340-4/11-web ©Master-Bilt Products division of Standex International, Inc. All rights reserved. Printed in USA.